

# **60" 4-Way Quadcycler Deck Parts Manual**



**HUSTLER®**

.....

*Hustler Turf Equipment*

.....

*P.O. Box 7000*

...

*Hesston, Kansas*

•

*67062-2097*



---

# Table of Contents

## Chapter 1

General Information ..... 1-1

## Chapter 2 Contents

Deck Assembly - 925115 ..... 2-2

Deck Assembly - 923144, 923268, 924605 & 924613 ..... 2-4

Deck Subassembly - 925115 ..... 2-6

Deck Subassembly - 923144, 923268, 924605 & 924613 ..... 2-8

## Chapter 3 Contents

Gauge Arm Assembly - 469221 ..... 3-2

60" Quad Deck Gauge Wheel Kit - 320523 ..... 3-3

Gauge Wheel Assembly - 307082 ..... 3-4

60" Deck Heavy Duty Gauge Wheel Kit - 315606K ..... 3-5

Gauge Arm Assembly - 466888 ..... 3-6

Spindle Assembly - 506212 ..... 3-8

## Chapter 4 Contents

Gearbox Breakdown - 532861 (WSI) ..... 4-2

Gearbox Breakdown - 532861 (Agrigear) ..... 4-3

Gearbox Breakdown - 532895 (WSI) ..... 4-4

Gearbox Breakdown - 532895 (Agrigear) ..... 4-5

## Chapter 5 Contents

Decal Group - 925115 ..... 5-2

Decal Group - 924605 & 924613 ..... 5-4

Index ..... i-1



# Chapter 1

## General Information

This Manual covers 60" 4-Way Mower Models: **923144, 923268, 924605, 924613 & 925115**

---

## Frequently Ordered Parts

<i>PART NO.</i>	<i>DESCRIPTION</i>
027284	60" 3-WAY Deck Belt

---

## Service Literature

<i>PART NO.</i>	<i>DESCRIPTION</i>
027300	60" 4-Way Mower Owner's Manual
374827	60" 4-Way Mower Assembly Instructions

---

*Note: Parts painted blue are no longer available.*

*Note: When ordering parts, you **must** use the service part number as shown for each part, not the index number. Always give the tractor model and serial number and the engine model and serial number to your parts and service representative.*

*Note: Items sold in bulk such as seals and hoses are sold by the foot.*

---

## Using this manual

Illustrations used were current at the time of printing, but subsequent production changes may cause your machine to vary slightly in detail. Excel Industries, Inc. reserves the right to redesign and change the machine as deemed necessary, without notification. If a change has been made to your machine which is not reflected in this parts manual, see your Hustler dealer for current information and parts.

## Hardware Description Codes & Abbreviations

The following codes are used throughout this parts manual. Refer to this list when ordering parts.

<b>ABBREVIATION</b>	<b>DESCRIPTION</b>
CB	Carriage Bolt
CE	Clevis Pin
CP	Cotter Pin
CS	Cap Screw
CW	Cup Washer
FDRW	Fender Washer
FW	Flat Washer
HX	Hex Head
LW	Lock Washer
MB	Machine Bushing
MS	Machine Screw
NT	Nut
SC	Self Tapping Cap Screw
SH	Socket Head
SB	Shoulder Bolt
SS	Set Screw
OD	Outside Diameter
ID	Inside Diameter

---

## Standard Torques

The following chart lists the standard torque values for the threaded fasteners found in this manual. Torque all cap screws, nuts and set screws to these values unless a different torque is shown in the Notes section next to the fastener.

<b>SIZE</b>	<b>FT-LBS</b>	<b>NM</b>	<b>SIZE</b>	<b>FT-LBS</b>	<b>NM</b>
.250	8.2	11.1	M3	1	1.3
.312	17	23	M4	2.2	3
.375	30	40	M5	4.5	6.1
.438	48	65	M6	7.7	10.4
.500	73	99	M8	18.5	25
.562	105	143	M10	37	50
.625	145	200	M12	64	87
.750	260	350	M16	160	215
.875	420	565	M20	320	435
1.00	625	850	M24	555	750

---

### **NOTE:**

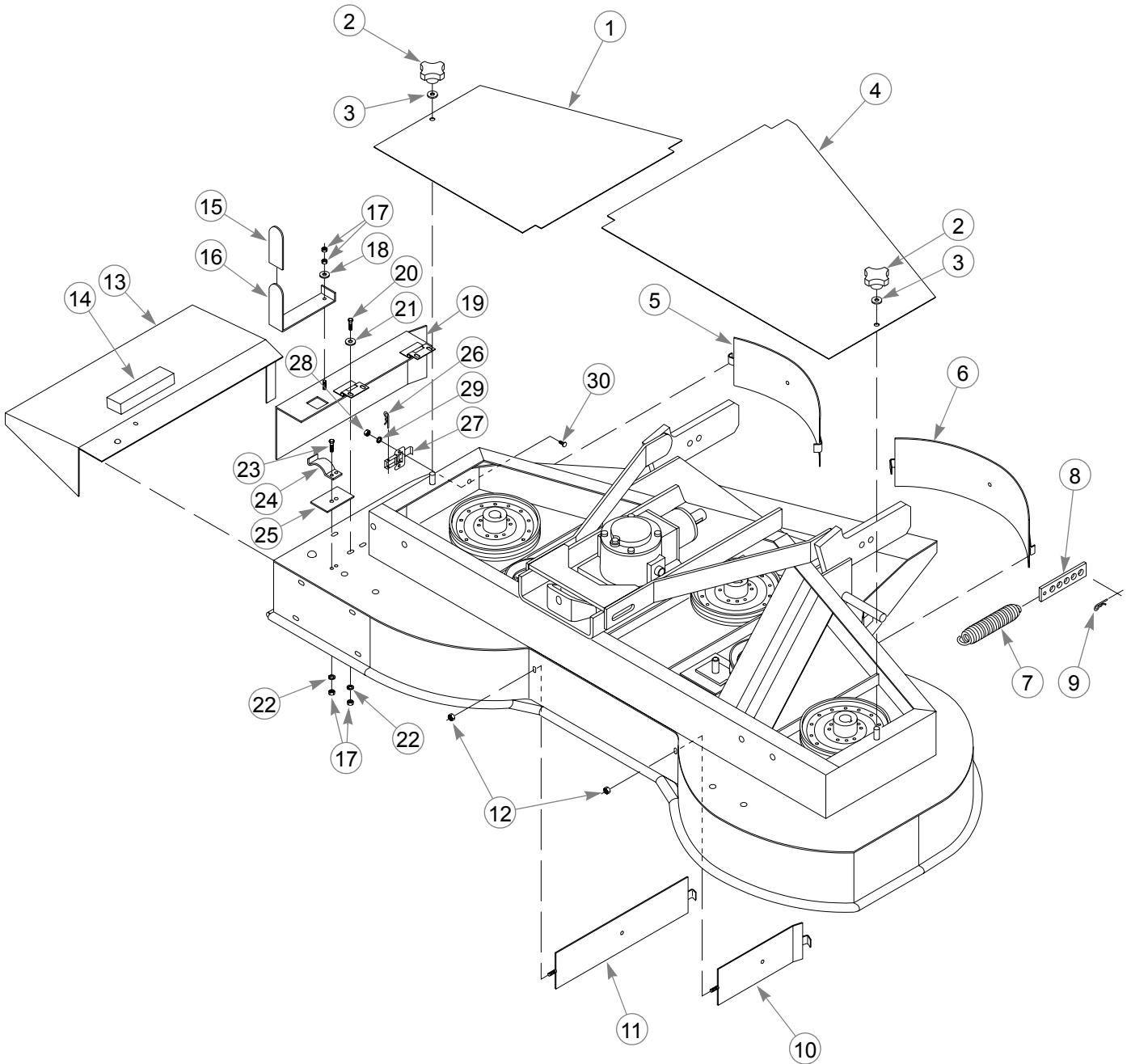
Lubricate all grease zerks.

---

## Chapter 2 Contents

Deck Assembly - 925115 . . . . .	2-2
Deck Assembly - 923144, 923268, 924605 & 924613 . . . . .	2-4
Deck Subassembly - 925115 . . . . .	2-6
Deck Subassembly - 923144, 923368, 924605 & 924613 . . . . .	2-8

# Deck Assembly - 925115





---

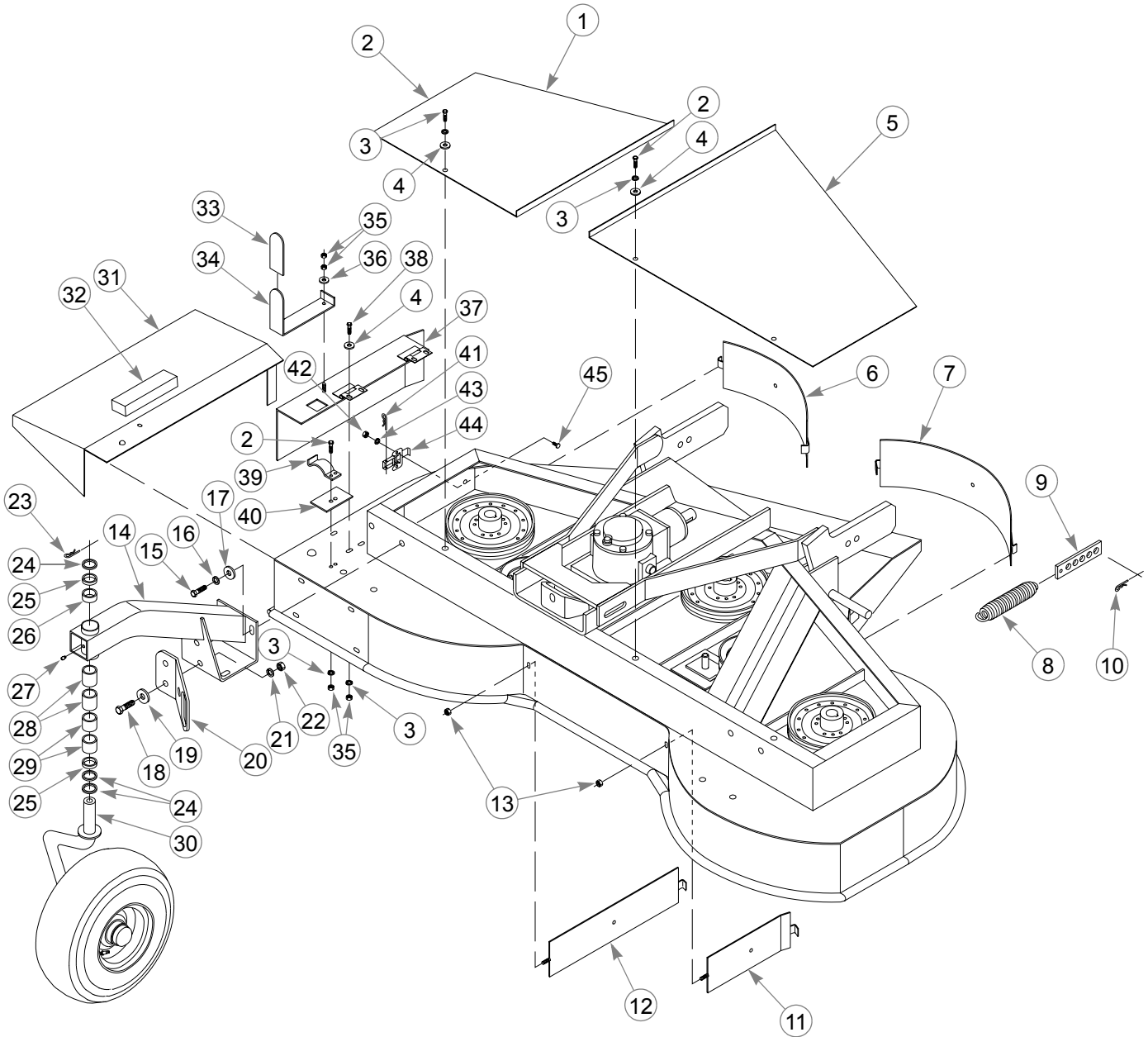
## **Deck Assembly - 925115**

<b>INDEX NO.</b>	<b>PART NO.</b>	<b>QTY.</b>	<b>DESCRIPTION</b>	<b>INDEX NO.</b>	<b>PART NO.</b>	<b>QTY.</b>	<b>DESCRIPTION</b>
1	306910	1	R/H DECK COVER	16	467258	1	HANDLE
2	075291	2	CLAMPING KNOB	17	024927	8	NT .25-20 HX G5 ZN
3	076547	2	FW .344 X .688 X .065 SAE ZN	18	017079	1	FW .250 X .560 X .040 SAE ZN
4	306928	1	L/H DECK COVER	19	474569	1	SIDE DISCHARGE COVER
5	474361	1	RIGHT REAR DISCHARGE DOOR	20	055939	4	CS .25-20 X .750 HX G5 ZN
6	474379	1	CENTER REAR DISCHARGE DOOR	21	089789	5	FW .266 X .750 X .060 ZN
7	011379	1	SPRING	22	017038	7	LW .250 MEDIUM SPRING ZN
8	370494	4	DECK SPRING STRAP	23	056077	2	CS .25-20 X 1.00 HX G5 ZN
9	023036	4	HP .148 X 2.690 ZN	24	287649	1	SIDE DISCHARGE CLIP
10	474460	1	L/H MULCHER BAFFLE	25	315465	1	CLIP PLATE
11	474478	1	R/H MULCHER BAFFLE	26	025320	2	HP .091 X 1.875 ZN
12	016816	2	NT .25-20 HX FL ZN	27	758821	2	OVER CENTER LATCH
13	474445	1	DEFLECTOR	28	035626	4	NT 10-24 HX ZN
14	259515	1	BUMPER	29	056176	4	LW #10 MEDIUM SPRING ZN
15	074559	1	GRIP	30	030437	4	MS 10-24 X .375 RD SL ZN

---

### **NOTES:**

# **Deck Assembly - 923144, 923268, 924605 & 924613**



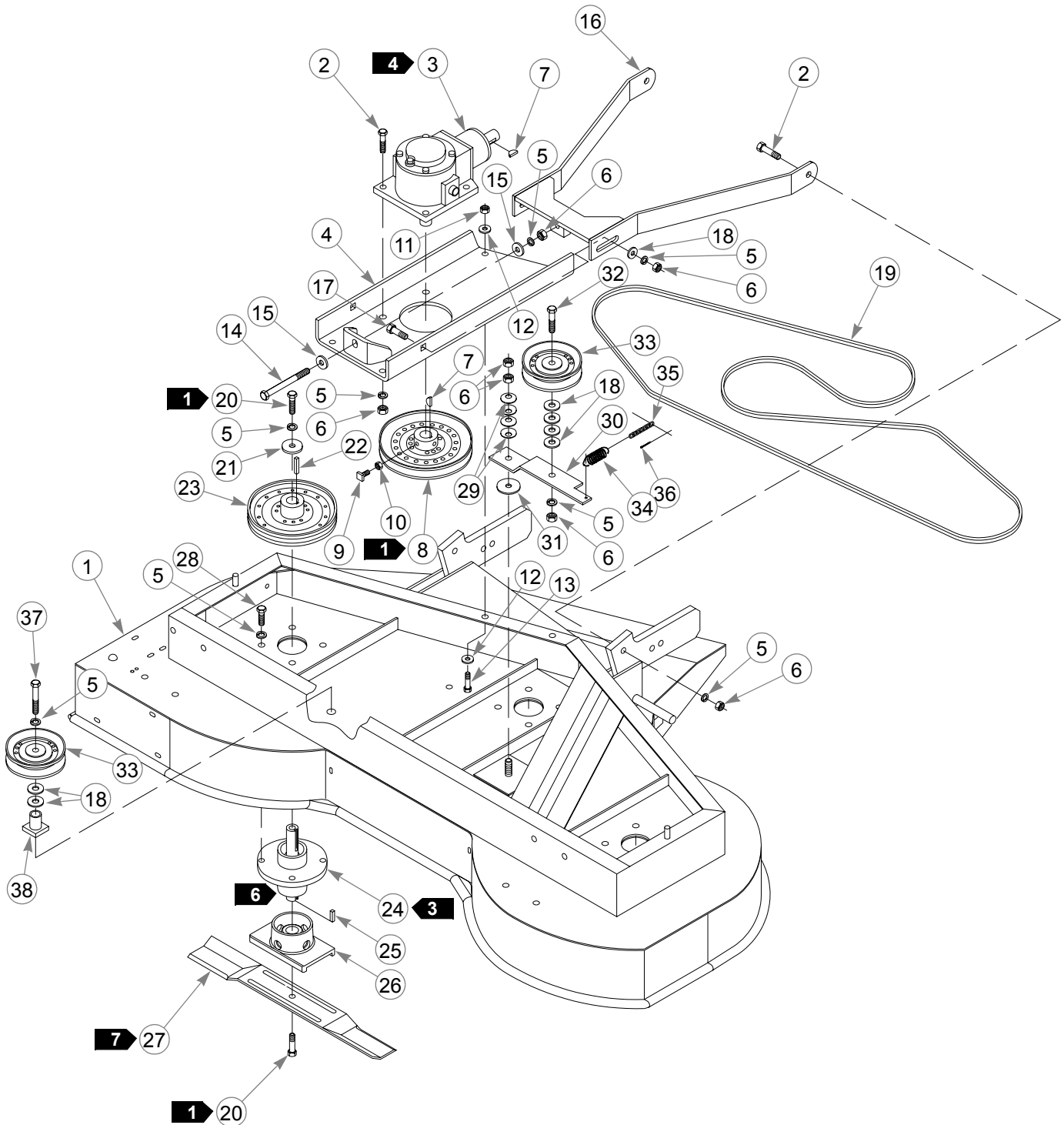
# Deck Assembly - 923144, 923268, 924605 & 924613

INDEX NO.	PART NO.	QTY.	DESCRIPTION	INDEX NO.	PART NO.	QTY.	DESCRIPTION
1	474700	1	R/H DECK COVER	24	045765	4	FW 1.030 X 1.50 X .134 ZN
2	056077	5	CS .25-20 X 1.00 HX G5 ZN	25	469924	2	Gauge Wheel Spacer .25
3	017038	9	LW .250 MEDIUM SPRING ZN	26	469882	2	Gauge Wheel Spacer .50
4	089789	7	FW .266 X .750 X .060 ZN	27	015495	2	Grease Zerk
5	474692	1	L/H DECK COVER	<b>1</b> 28	018747	4	Bronze Bushing
6	474361	1	RIGHT REAR DISCHARGE DOOR	29	469916	4	Gauge Wheel Spacer 1"
7	474379	1	CENTER REAR DISCHARGE DOOR	<b>2</b> 30	469221	2	Gauge Wheel Assembly
8	011379	1	SPRING	31	474445	1	Deflector
9	370494	4	DECK SPRING STRAP	32	259515	1	Bumper
10	023036	4	HP .148 X 2.690 ZN	33	074559	1	Grip
11	474460	1	L/H MULCHER BAFFLE	34	467258	1	Handle
12	474478	1	R/H MULCHER BAFFLE	35	024927	8	NT .25-20 HX G5 ZN
13	016816	2	NT .25-20 HX FL ZN	36	017079	1	FW .250 x .560 x .040 SAE ZN
14	474486	2	GAUGE ARM	37	474569	1	Side Discharge Cover
15	036244	8	CS .375-16 X 1.00 HX G5 ZN	38	055939	4	CS .25-20 x .750 HX G5 ZN
16	017012	8	LW .375 MEDIUM SPRING ZN	39	287649	1	Side Discharge Clip
17	049346	8	FW .375 X .870 X .078 ZN	40	315465	1	Clip Plate
18	016527	4	CS .50-13 X 1.00 HX G5 ZN	41	025320	2	HP .091 x 1.875 ZN
19	017137	4	FW .560 X 1.370 X .109 SAE ZN	42	035626	4	NT 10-24 HX ZN
20	537225	2	TIE DOWN BRACKET	43	056176	4	LW #10 Medium Spring ZN
21	017046	4	LW .50 MEDIUM SPRING ZN	44	758821	2	Over Center Latch
22	008193	4	NT .50-13 HX G5 ZN	45	030437	4	MS 10-24 x .375 RD SL ZN
23	085985	2	HP .243 X 4.380 LG				

### NOTES:

1. Supplied with item 14 but may be ordered separately.
2. See "Gauge Arm Assembly - 466888" on page 3-6 for breakdown.

# Deck Subassembly - 925115



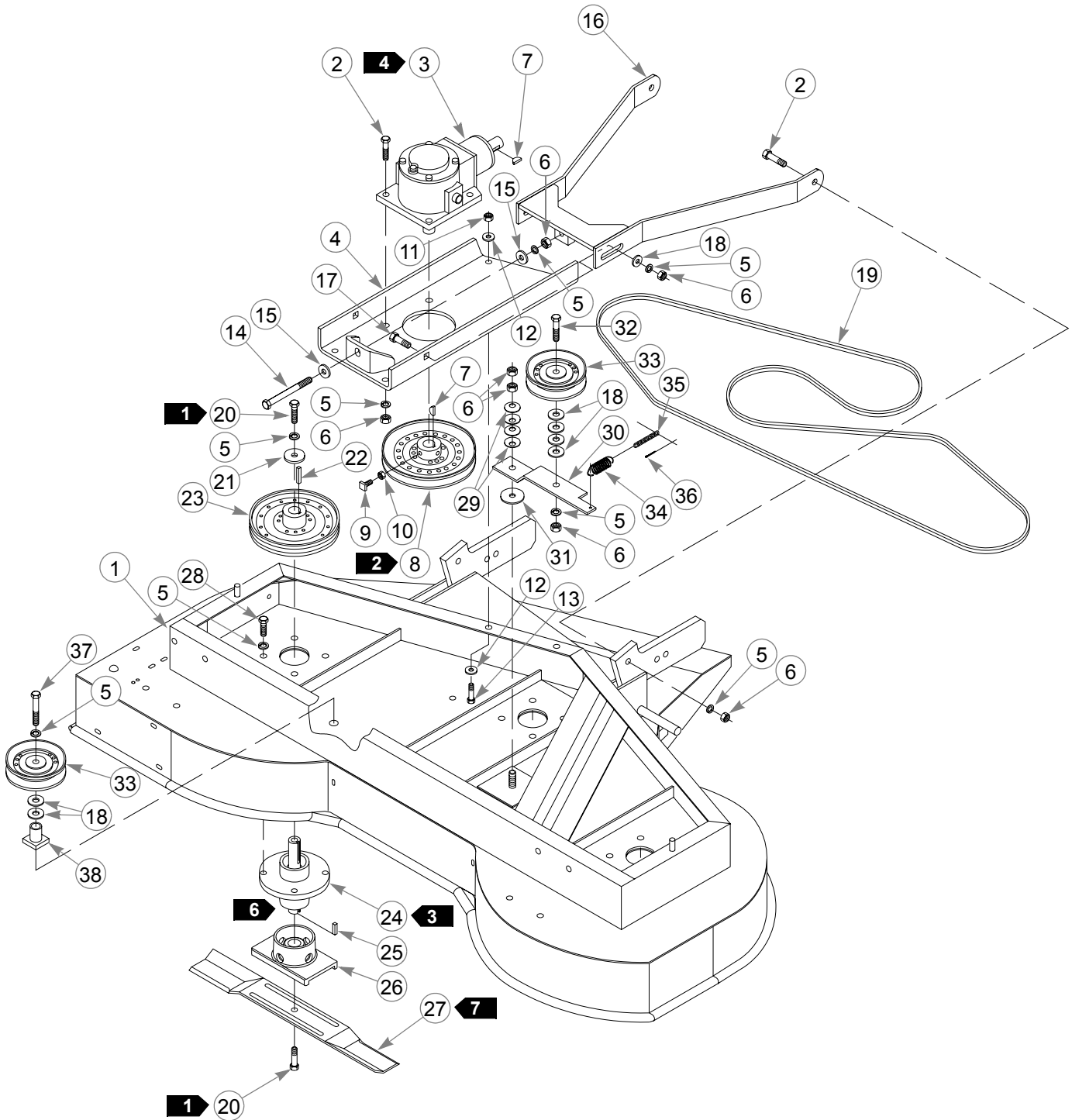
# Deck Subassembly - 925115

INDEX NO.	PART NO.	QTY.	DESCRIPTION	INDEX NO.	PART NO.	QTY.	DESCRIPTION
1	533935	1	60" 4-WAY DECK ASSEMBLY	20	078378	6	CS .50-20 X 1.50 HX G5 ZN
2	074252	4	CS .50-13 X 1.50 HX G5 ZN	21	078386	3	FW .510 X 1.750 X .187 ZN
3	532861	1	GEARBOX	22	212076	3	KEY .250 X .250 X 1.50
4	474528	1	GEARBOX MOUNT	23	518316	3	DECK DRIVE PULLEY
5	017046	26	LW .50 MEDIUM SPRING ZN	<b>8</b> 24	506212	3	SPINDLE HOUSING ASSEMBLY
<b>5</b> 6	008193	12	NT .50-13 HX G5 ZN	25	712372	3	KEY .250 X .250 X .660
7	036715	2	WOODRUFF KEY	26	035808	3	BLADE SADDLE
8	467324	1	PULLEY 8"	27	076752	3	21" BLADE
9	042051	2	SS .375-16 X 1.00 SQ-HD ZN	28	016527	12	CS .50-13 X 1.00 HX G5 ZN
10	706168	2	NT .375-16 HX JAM G5 ZN	29	068759	4	CW .560 X 1.340 X .050 PN
11	041707	4	NT .437-14 HX G5 ZN	30	474544	1	IDLER ARM BRACKET
12	773259	8	FW .50 X 1.250 X .064/.104 SAE F436 ZN	31	263517	1	BEARING DISC
13	773242	4	CS .437-14 X 1.250 HX G5 ZN	32	078949	1	CS .50-13 X 2.00 G5 ZN
14	025601	1	CS .50-13 X 4.620 FULL TD ZN	33	475723	2	IDLER PULLEY
15	058875	2	MB .510 X .870 X .050 ZN	34	036384	1	IDLER SPRING
16	467126	1	ADJUSTER ARM	35	244384	1	IDLER CHAIN
17	028274	2	CB .50-13 X 1.50 FULL ZN	36	017277	1	CP .187D X 1.00 LG HML ZN
18	017137	8	FW .560 X 1.370 X .109 SAE ZN	37	061812	1	CS .50-13 X 3.50 HX G5 ZN
19	027284	1	DECK DRIVE BELT	38	469619	1	IDLER PULLEY BRACKET

## NOTES:

1. Torque to 50-60 Ft. Lbs.
2. Item 8, pulley, must be in the same horizontal plane as the three item 23, pulleys, within  $\pm.03$  tolerance.
3. Assemble item 24, spindle housing, so the grease zerk faces the front of the deck.
4. Item 3, gearbox, to be filled to center of sight gauge upon installation with Amoco 80W-90 or equivalent gear lube.
5. Tighten item 6, nut, to 20 Ft. Lbs. then loosen 1/4 turn.
6. Shaft and exposed end of bearings must be free of rust & wiped clean. Coat entire shaft and exposed end of bearings with anti-seize.
7. To check for proper blade alignment, both ends of center blade must align with both ends of outer blades. When blade tips are closest together they must be within .20" vertically.
8. See "Spindle Assembly - 506212" on page 3-8 for breakdown

# **Deck Subassembly - 923144, 923268, 924605 & 924613**



# Deck Subassembly - 923144, 923268, 924605 & 924613

INDEX NO.	PART NO.	QTY.	DESCRIPTION	INDEX NO.	PART NO.	QTY.	DESCRIPTION
1	533935	1	60" 4-WAY DECK ASSEMBLY	20	078378	6	CS .50-20 X 1.50 HX G5 ZN
2	074252	4	CS .50-13 X 1.50 HX G5 ZN	21	078386	3	FW .510 X 1.750 X .187 ZN
3	532861	1	GEARBOX (MODEL 924605)	22	212076	3	KEY .250 X .250 X 1.50
	532895	1	GEARBOX (MODEL 924613)	23	518316	3	DECK DRIVE PULLEY
4	474528	1	GEARBOX MOUNT	<b>8</b> 24	506212	3	SPINDLE HOUSING ASSEMBLY
5	017046	26	LW .50 MEDIUM SPRING ZN	25	712372	3	KEY .250 X .250 X .660
<b>5</b> 6	008193	12	NT .50-13 HX G5 ZN	26	035808	3	BLADE SADDLE
7	036715	2	WOODRUFF KEY	27	076752	3	21" BLADE
8	467324	1	PULLEY 8"	28	016527	12	CS .50-13 X 1.00 HX G5 ZN
9	042051	2	SS .375-16 X 1.00 SQ-HD ZN	29	068759	4	CW .560 X 1.340 X .050 PN
10	706168	2	NT .375-16 HX JAM G5 ZN	30	474544	1	IDLER ARM BRACKET
11	041707	4	NT .437-14 HX G5 ZN	31	263517	1	BEARING DISC
12	773259	8	FW .50 X 1.250 X .064/.104 SAE F436 ZN	32	078949	1	CS .50-13 X 2.00 G5 ZN
13	773242	4	CS .437-14 X 1.250 HX G5 ZN	33	475723	2	IDLER PULLEY
14	025601	1	CS .50-13 X 4.620 FULL TD ZN	34	036384	1	IDLER SPRING
15	058875	2	MB .510 X .870 X .050 ZN	35	244384	1	IDLER CHAIN
16	467126	1	ADJUSTER ARM	36	017277	1	CP .187D X 1.00 LG HML ZN
17	028274	2	CB .50-13 X 1.50 FULL ZN	37	061812	1	CS .50-13 X 3.50 HX G5 ZN
18	017137	8	FW .560 X 1.370 X .109 SAE ZN	38	469619	1	IDLER PULLEY BRACKET
19	027284	1	DECK DRIVE BELT				

### NOTES:

1. Torque to 50-60 Ft. Lbs.
2. Item 8, pulley, must be in the same horizontal plane as the three item 23, pulleys, within  $\pm .03$  tolerance.
3. Assemble item 24, spindle housing, so the grease zerk faces the front of the deck.
4. Item 3 gearbox to be filled to center of sight gauge upon installation with Amoco 80W-90 or equivalent gear lube.
5. Tighten item 6, nut, to 20 Ft. Lbs. then loosen 1/4 turn.
6. Shaft and exposed end of bearings must be free of rust & wiped clean. Coat entire shaft and exposed end of bearings with anti-seize.
7. To check for proper blade alignment, both ends of center blade must align with both ends of outer blades. When blade tips are closest together they must be within .20" vertically.
8. See "Spindle Assembly - 506212" on page 3-8 for breakdown.



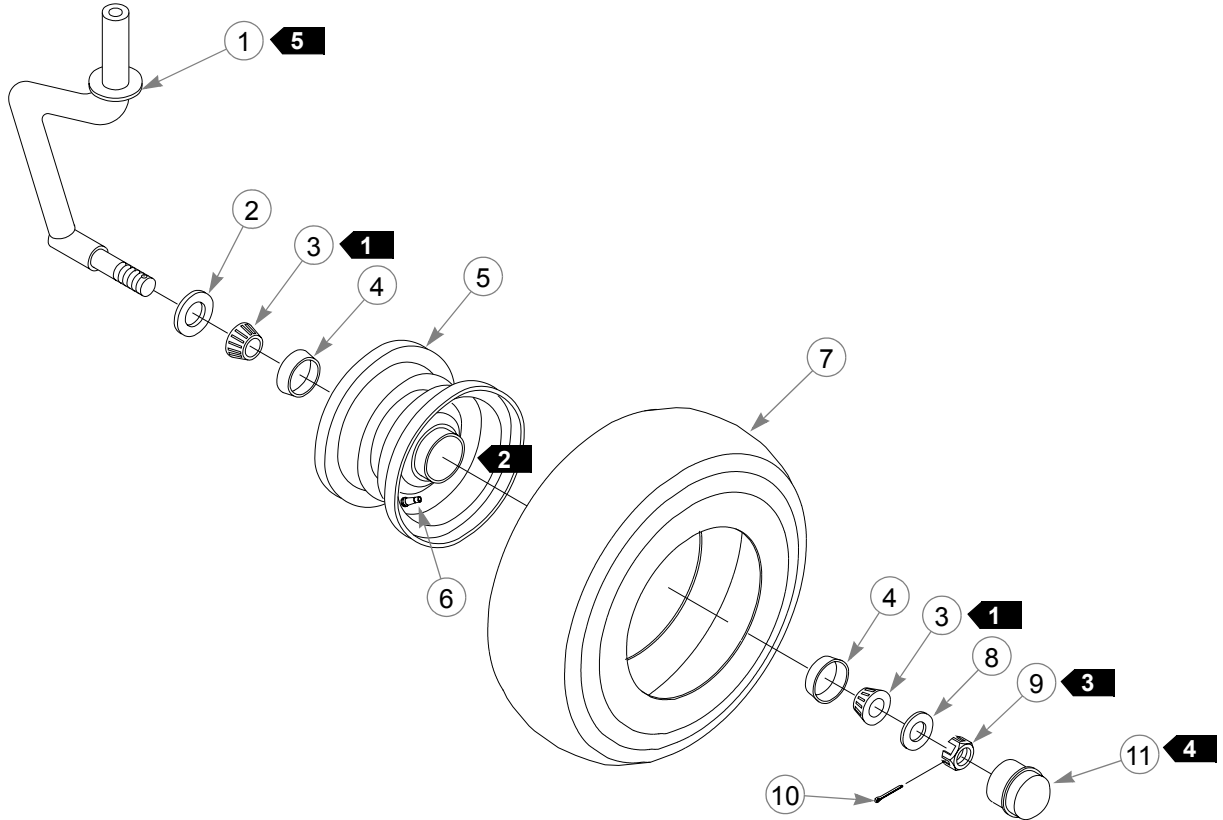


---

## Chapter 3 Contents

Gauge Arm Assembly - 469221 . . . . .	3-2
60" Quad Deck Gauge Wheel Kit - 320523 . . . . .	3-3
Gauge Wheel Assembly - 307082 . . . . .	3-4
60" Deck Heavy Duty Gauge Wheel Kit - 315606K . . . . .	3-5
Gauge Arm Assembly - 466888 . . . . .	3-6
Spindle Assembly - 249318 . . . . .	3-8

# Gauge Arm Assembly - 469221

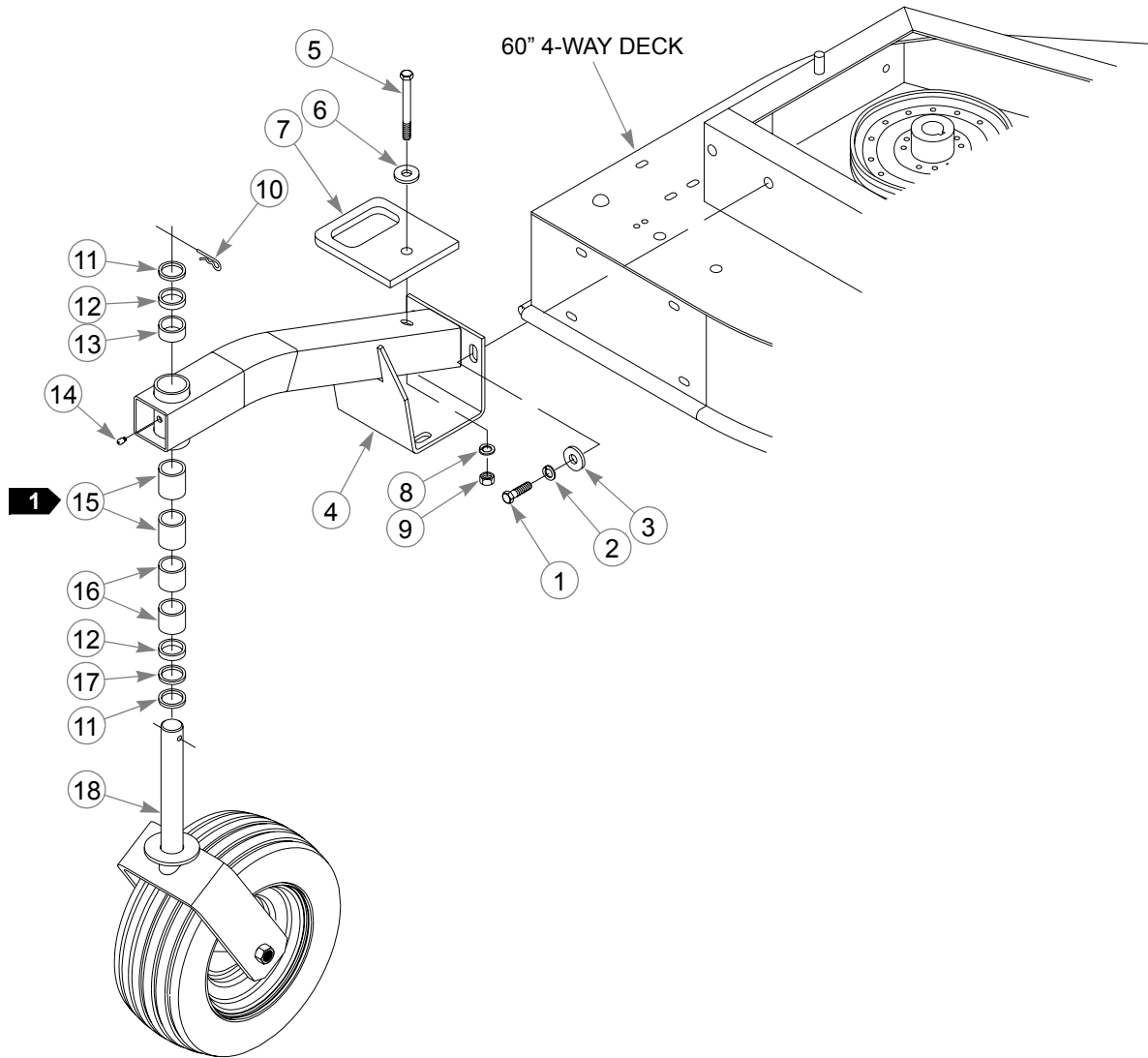


INDEX NO.	PART NO.	QTY.	DESCRIPTION	INDEX NO.	PART NO.	QTY.	DESCRIPTION
1	469791	1	GAUGE WHEEL FORK	7	747402	1	TIRE
2	049148	1	OIL SEAL	8	048850	1	MACHINE BUSHING
3	049155	2	BEARING CONE	9	048868	1	NT .75-16 HX SL PN
4	049163	2	BEARING CUP	10	017244	1	CP .125D X 1.00 LG HML ZN
5	747410	1	WHEEL	11	049171	1	DUST CAP
6	019521	1	VALVE STEM	12	747428	1	TIRE & WHEEL ASS'Y (INCLUDES ITEMS 4-7)

## NOTES:

1. Pack bearings thoroughly with grease before installing into wheel hub.
2. Fill wheel hub cavity between bearings approximately 2/3 full with grease.
3. To adjust wheel bearing, raise wheel off floor. Tighten item 9, nut, while rotating the wheel until there is a slight bind to be sure all bearing surfaces are in contact. Then back off nut 1/6-1/4 turn to nearest locking hose or sufficiently to allow wheel to rotate freely within limits of .001-.010 (ref) end play. Lock nut at this position by installing item 10, cotter pin.
4. Fill cap 3/4 full with grease then press into wheel hub.
5. Coat shaft end with light coat of grease.

# 60" Quad Deck Gauge Wheel Kit - 320523

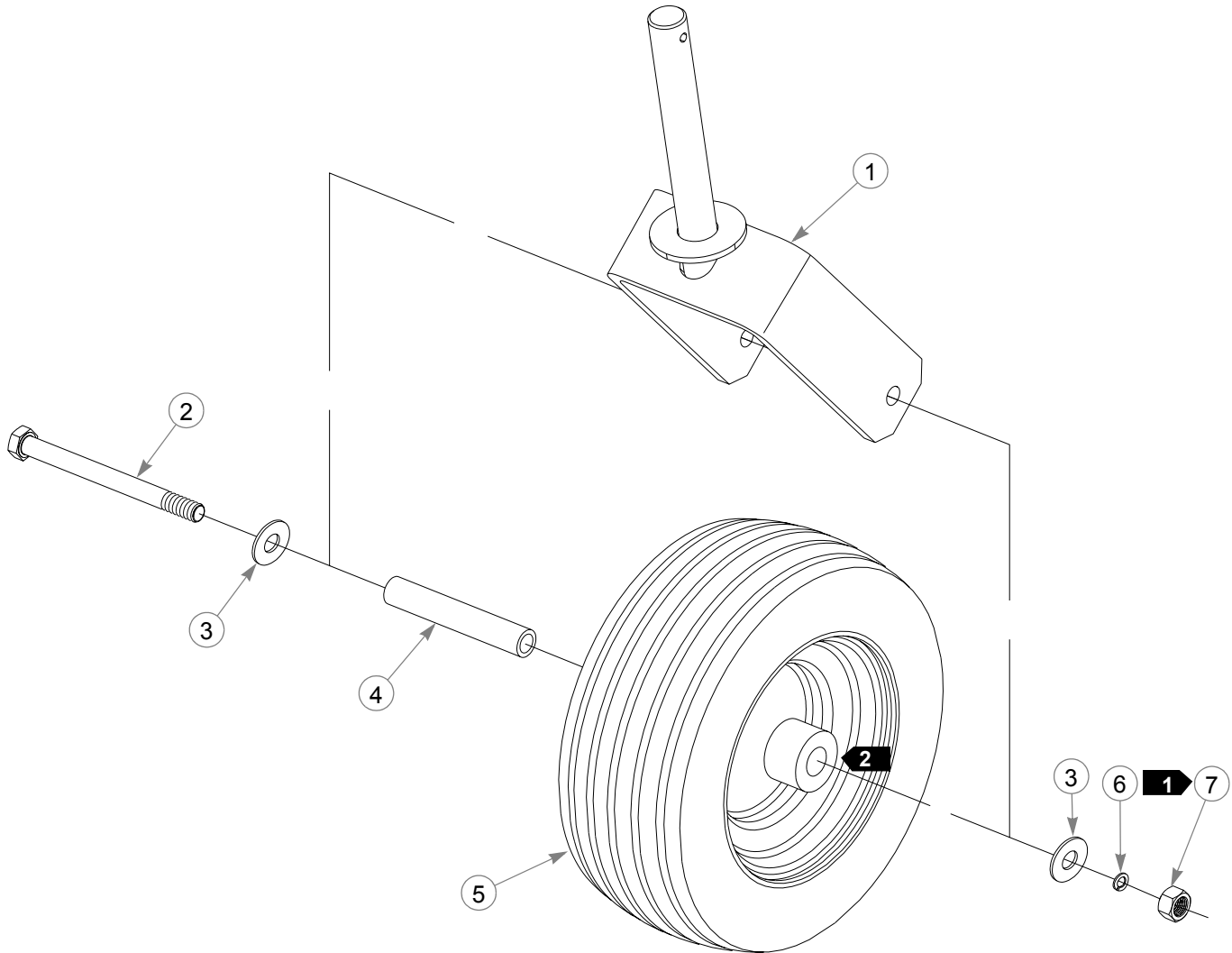


INDEX NO.	PART NO.	QTY.	DESCRIPTION	INDEX NO.	PART NO.	QTY.	DESCRIPTION
1	036244	8	CS .375-16 X 1.00 HX G5 ZN	10	085985	2	HP #19 WEST WIRE-HITCH ZN
2	017012	8	LW .375 MEDIUM SPRING ZN	11	045765	6	FW 1.030 X 1.50 X .134 ZN
3	049346	8	FW .375 X .870 X .078 ZN	12	469924	4	GAUGE WHEEL SPACER .25"
4	306977	2	GAUGE ARM	13	469882	2	GAUGE WHEEL SPACER .50"
5	077859	2	CS .50-13 X 3.250 HX G5 ZN	14	015495	2	GREASE FITTING
6	017137	4	FW .560 X 1.370 X .109 SAE ZN	15	018747	4	BRONZE BUSHING
7	481531	2	FRONT TIE DOWN	16	469916	4	GAUGE WHEEL SPACER 1.0"
8	017046	2	LW .50 MEDIUM SPRING ZN	17	082180	2	MB 1.00 X 1.50 X .049 PN
9	008193	2	NT .50-13 HX G5 ZN	18	307082	2	GAUGE WHEEL ASSEMBLY

## NOTES:

1. Supplied with item 4 but may be ordered separately.
2. See "Gauge Wheel Assembly - 307082" on page 3-4 for breakdown.

# Gauge Wheel Assembly - 307082

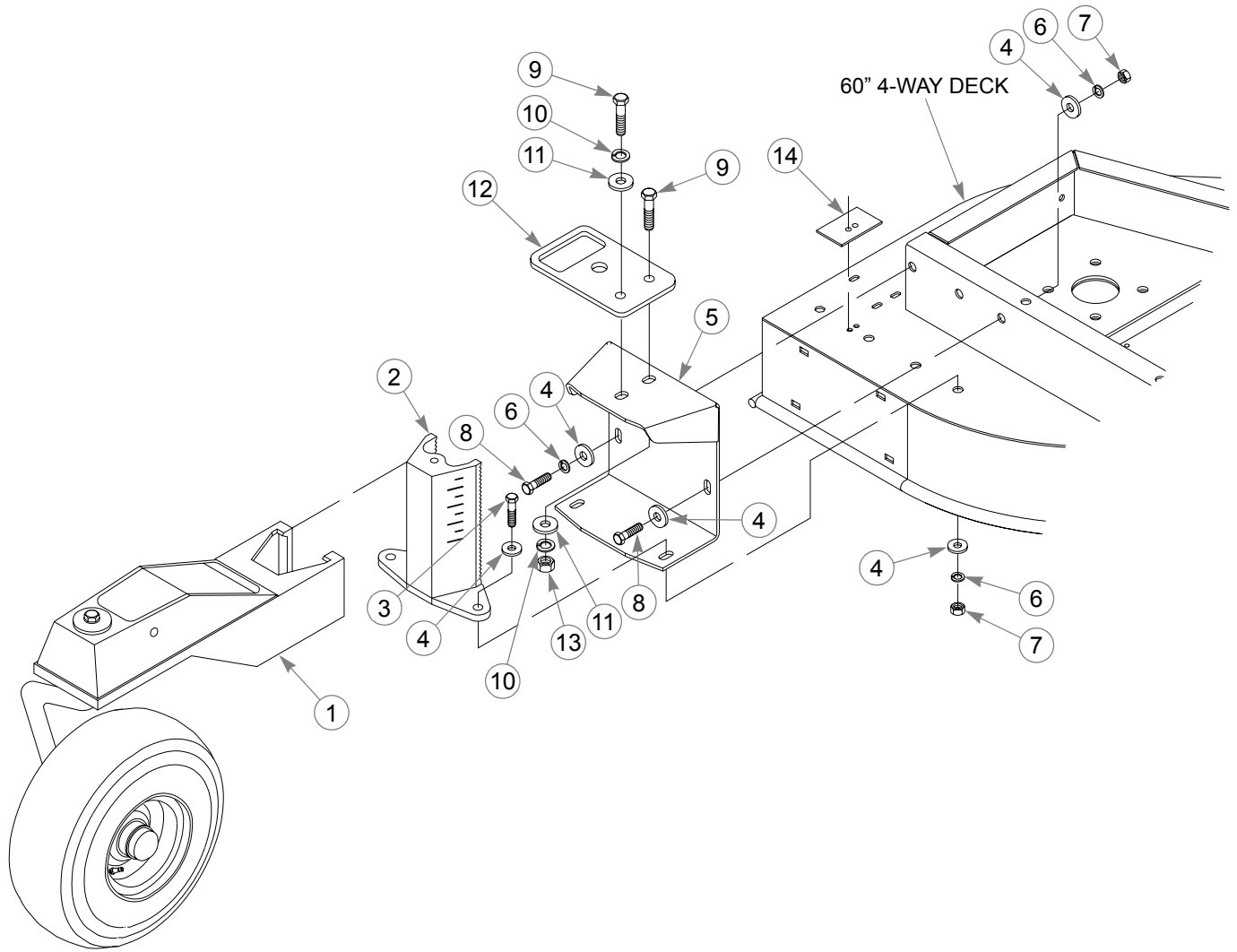


INDEX NO.	PART NO.	QTY.	DESCRIPTION	INDEX NO.	PART NO.	QTY.	DESCRIPTION
1	306936	1	11" GAUGE WHEEL ASSEMBLY	5	768044	1	TIRE & WHEEL ASSEMBLY 11 X 4-5
2	042630	1	CS .50-13 X 6.50 HX G5 ZN	6	017046	1	LW .50 MEDIUM SPRING ZN
3	004168	2	FW .50 X 1.060 X .090 SAE ZN	7	067918	1	NT .50-13 HX G8 ZN
4	306969	1	GAUGE WHEEL SPACER				

## NOTES:

1. Torque to 75-85 Ft. Lbs.
2. After items 1 & 5 are assembled, apply grease to zerk until grease appears at the end of the wheel hub.

# **60" Deck Heavy Duty Gauge Wheel Kit - 315606K**

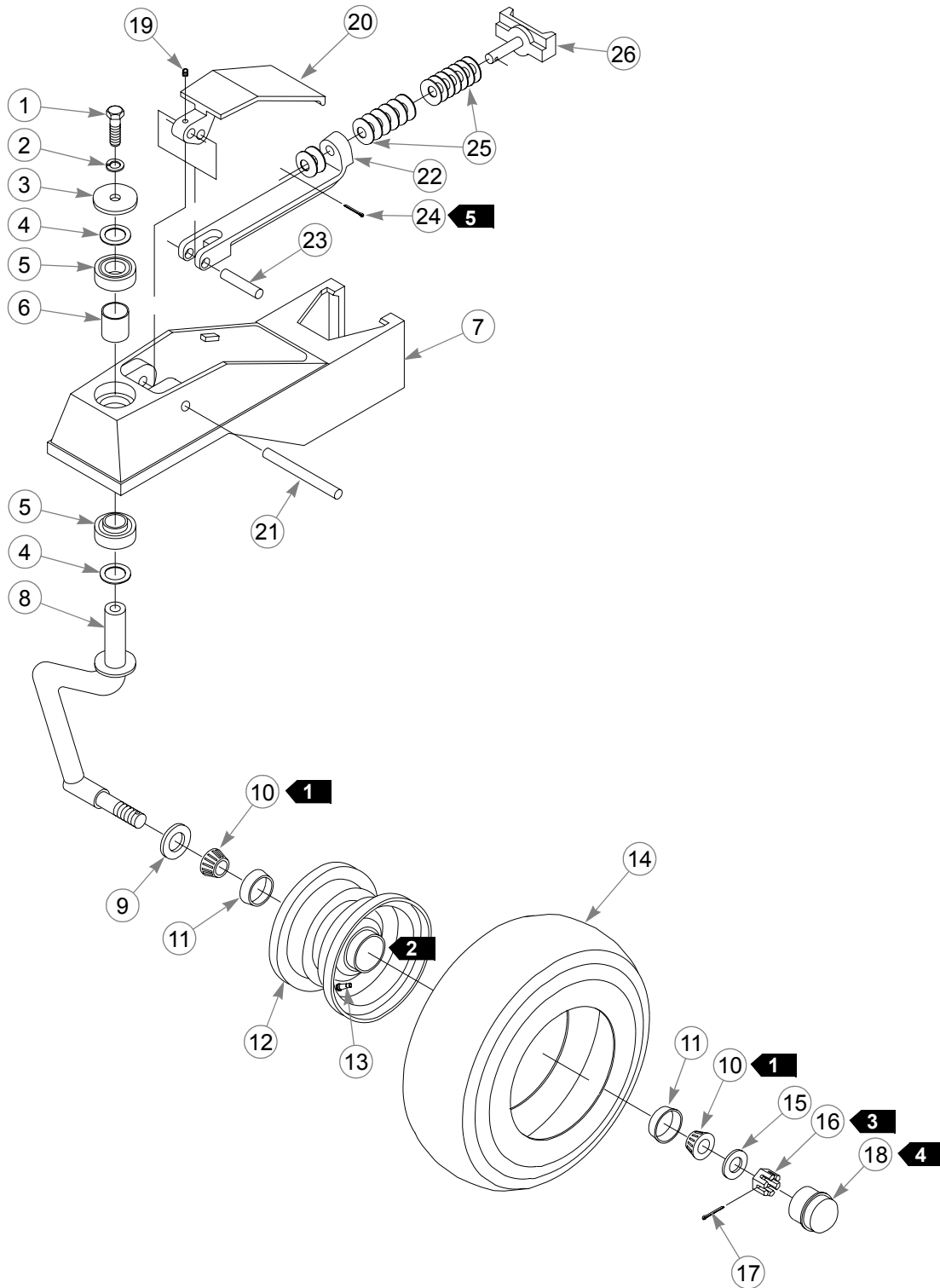


INDEX NO.	PART NO.	QTY.	DESCRIPTION	INDEX NO.	PART NO.	QTY.	DESCRIPTION
<b>1</b>	466888	2	GAUGE ARM ASSEMBLY	8	036244	4	CS .375-16 X 1.00 HX G5 ZN
2	532887	2	GAUGE ARM MOUNT	9	074252	8	CS .50-13 X 1.50 HX G5 ZN
3	080655	4	CS .375-16 X 1.50 HX G5 ZN	10	017046	8	LW .50 MEDIUM SPRING ZN
4	712919	16	FW .406 X 1.00 X .120 HRD ZN	11	017137	4	FW .560 X 1.370 X .109 SAE ZN
5	315911	2	GAUGE ARM MOUNT BRACKET	12	537175	2	TIE DOWN BRACKET
6	017012	8	LW .375 MEDIUM SPRING ZN	13	008193	6	NT .50-13 HX G5 ZN
7	054502	4	NT .375-16 HX G5 ZN	14	315622	1	CLIP PLATE

## **NOTES:**

1. See "Gauge Arm Assembly - 466888" on page 3-6 for breakdown.

# Gauge Arm Assembly - 466888



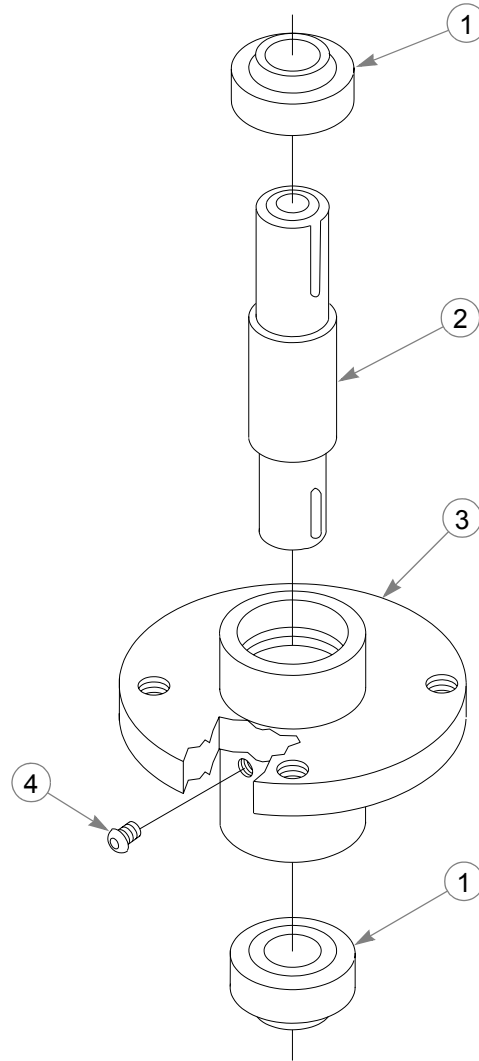
# Gauge Arm Assembly - 466888

INDE X NO	PART NO.	QTY.	DESCRIPTION	INDE X NO	PART NO.	QTY.	DESCRIPTION
1	016527	1	CS .50-13 X 1.00 HX G5 ZN	15	048850	1	MACHINE BUSHING
2	017046	1	LW .50 MEDIUM SPRING ZN	16	048868	1	NT .75-16 HXSL PN
3	344267	1	FW .510 X 2.150 X .187 SPL ZN	17	011387	1	CP .125D X 1.250 LG HML ZN
4	082180	2	MB 1.00 X 1.50 X .049 PN	18	049171	1	DUST CUP
5	077123	2	BEARING	19	017350	1	SS .25-20 X .250 SH BO
6	310185	1	SPACER	20	466698	1	GAUGE WHEEL ARM HANDLE
7	532911	1	GAUGE WHEEL ARM	21	315226	1	HANDLE PIN
8	506428	1	GAUGE WHEEL FORK	22	466680	1	LOCK LINKAGE
9	049148	1	OIL SEAL	23	315234	1	LINKAGE PIN
10	049155	2	BEARING	24	017277	1	CP .187 X 1.00 LG HML ZN
11	049163	2	BEARING CUP	25	068759	13	CW .560 X 1.340 X .050 PN
12	747410	1	GAUGE WHEEL 6 X 3.5	26	466672	1	LOCK PIN
13	019521	1	VALVE STEM		747428		TIRE & WHEEL ASSEMBLY (INCLUDES ITEMS 11-14)
14	747402	1	TIRE 13 X 5 X 6				

## NOTES:

1. Pack wheel bearings thoroughly with grease before installing.
2. Fill wheel hub cavity between bearings approximately 2/3 full with grease.
3. To adjust wheel bearing, raise wheel off floor, tighten item 16, nut, while rotating the wheel, until there is a slight bind to be sure all bearing surfaces are in contact. Then back off nut 1/6-1/4 turn to nearest locking hole or sufficiently to allow wheel to rotate freely within limits of .001-.010 (ref) end play. Lock nut within limits of .001-.010 (ref) end play. Lock nut at this position by installing cotter pin.
4. Fill cap 3/4 full with grease then press into wheel hub.
5. Do not fully spread item 24, cotter pin, for quicker adjustment of washers.

# Spindle Assembly - 506212



---

INDEX NO.	PART NO.	QTY.	DESCRIPTION	INDEX NO.	PART NO.	QTY.	DESCRIPTION
1	077123	2	BEARING	3	034843	1	SPINDLE HOUSING
2	712364	1	SPINDLE SHAFT	4	012005	1	GREASE ZERK

---

## NOTES:

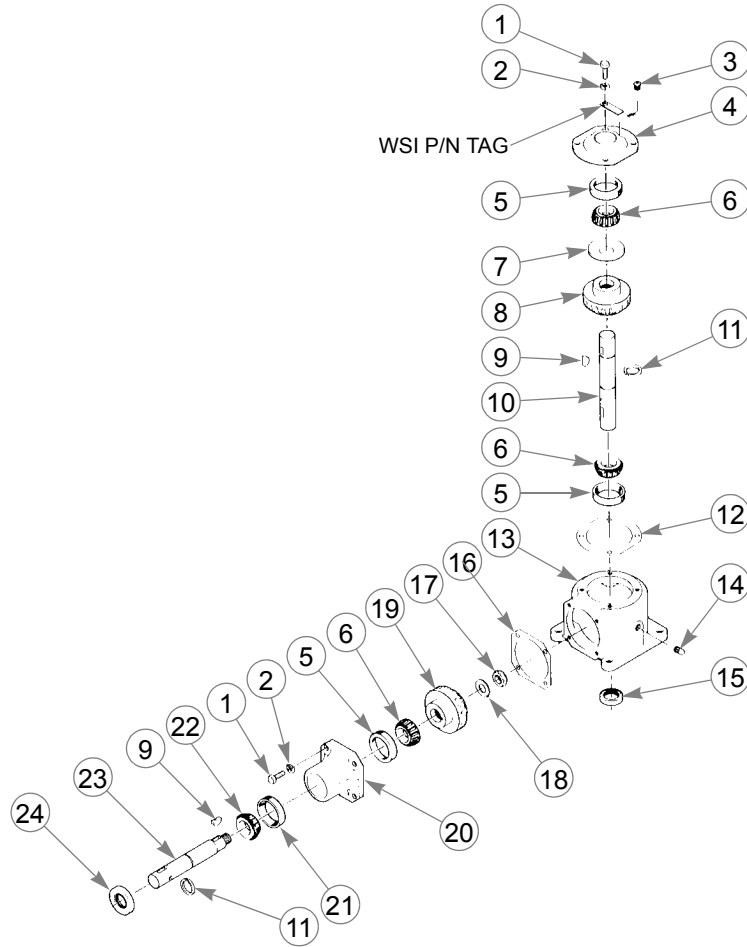


---

## Chapter 4 Contents

Gearbox Breakdown - 532861 (WSI) . . . . .	4-2
Gearbox Breakdown - 532861 (Agrigear) . . . . .	4-3
Gearbox Breakdown - 532895 (WSI) . . . . .	4-4
Gearbox Breakdown - 532895 (Agrigear) . . . . .	4-5

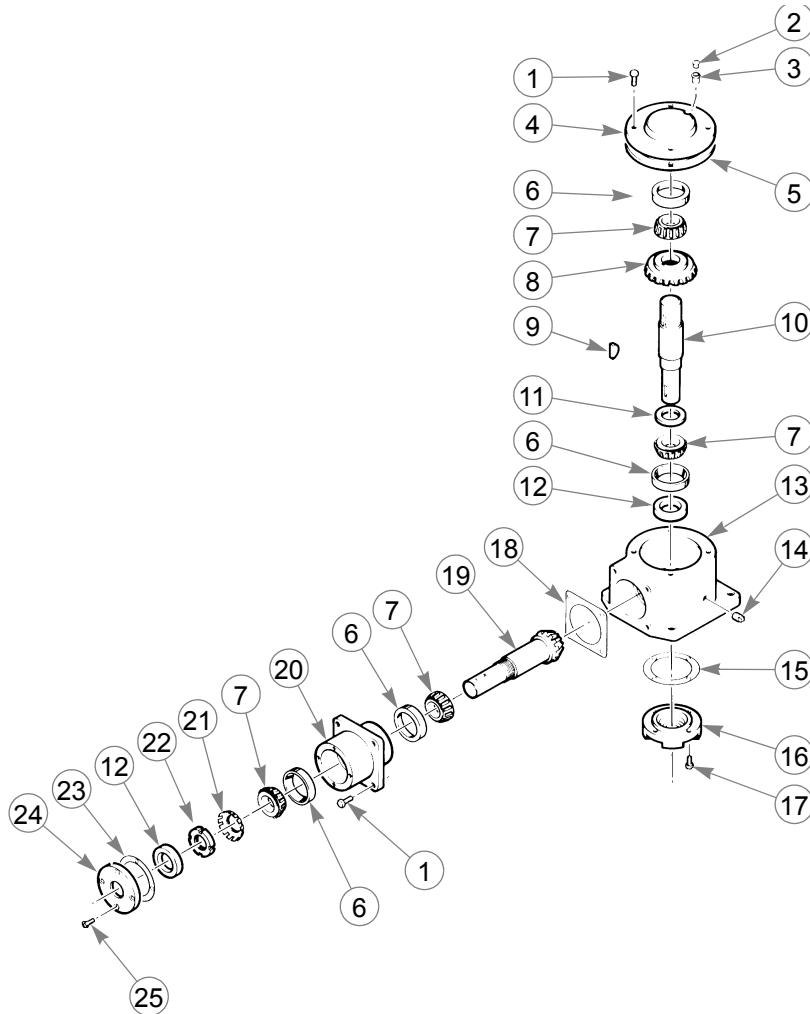
# Gearbox Breakdown - 532861 (WSI)



INDEX NO.	PART NO.	QTY.	DESCRIPTION	INDEX NO.	PART NO.	QTY.	DESCRIPTION
1	036707	8	CS .312-18 X .875 HX G5 BO	13		1	CASE
2	017004	8	LW .312 MEDIUM SPRING ZN	14	035345	2	PLUG .25 NPT
3	036046	1	RELIEF VALVE	15	045658	1	SHAFT SEAL
4	046656	1	END PLATE	16	045518	A/R	SHIM .003
5	045633	3	BEARING CUP		045500	A/R	SHIM .005
6	045641	3	BEARING CONE		045492	A/R	SHIM .02
7	045484	1	RING SEAL	17	045682	1	NT .625-18 HX NL
8	045534	1	R/H GEAR	18	017145	1	MB .620 X 1.120 X .080 PN
9	081752	2	WOODRUFF KEY	19	045526	1	L/H GEAR
10	045567	1	CROSS SHAFT	20	045575	1	PINION HOUSING
11	045476	3	RETAINING RING	21	049106	1	BEARING CUP
12	045450	A/R	SHIM .003	22	048991	1	BEARING CONE
	045468	A/R	SHIM .005	23	045559	1	PINION SHAFT
	045443	A/R	SHIM .02	24	045666	1	SHAFT SEAL

## NOTES:

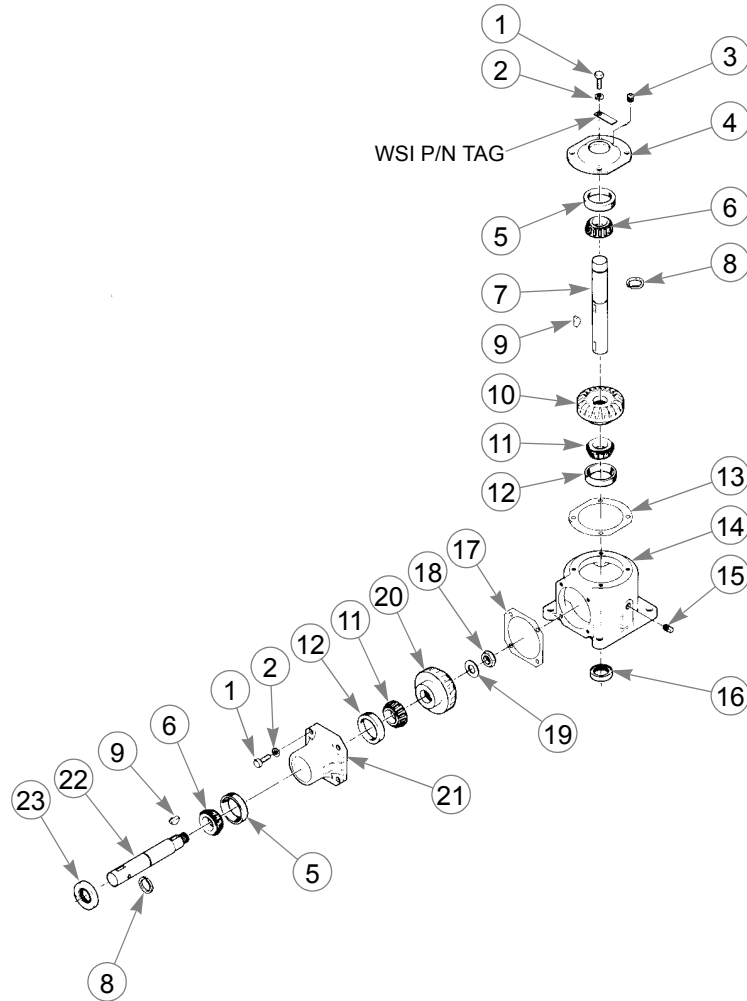
# Gearbox Breakdown - 532861 (Agrigear)



INDEX NO.	PART NO.	QTY.	DESCRIPTION	INDEX NO.	PART NO.	QTY.	DESCRIPTION
1	036707	8	CS .312-18 X .875 HX G5 BO	14	740829	1	SIGHT GLASS
2	036046	1	RELIEF VALVE	15	036665	2	SEAL CAP SHIM
3	036731	1	REDUCER BUSHING	16	036558	1	SEAL CAP
4	036525	1	BEARING CAP	17	019216	4	CS .25-20 X .750
5	036640	2	BEARING CAP SHIM	18	036632	2	CARRIER SHIM
6	036608	4	BEARING CUP	19	034751	1	PINION SHAFT (19 TEETH)
7	036616	4	BEARING CONE	20	036533	1	PINION CARRIER
8	034769	1	GEAR (25 TEETH)	21	036681	1	LOCK WASHER
9	036715	1	WOODRUFF KEY	22	036699	1	LOCK NUT
10	034736	1	GEAR SHAFT	23	036657	2	SEAL CAP SHIM
11	036673	1	GEAR SHAFT SPACER	24	036541	1	CARRIER SEAL CAP
12	036624	2	SEAL	25	036723	4	MS 10-24 X .750 FT SH BO
13	036517	1	CASE				

## NOTES:

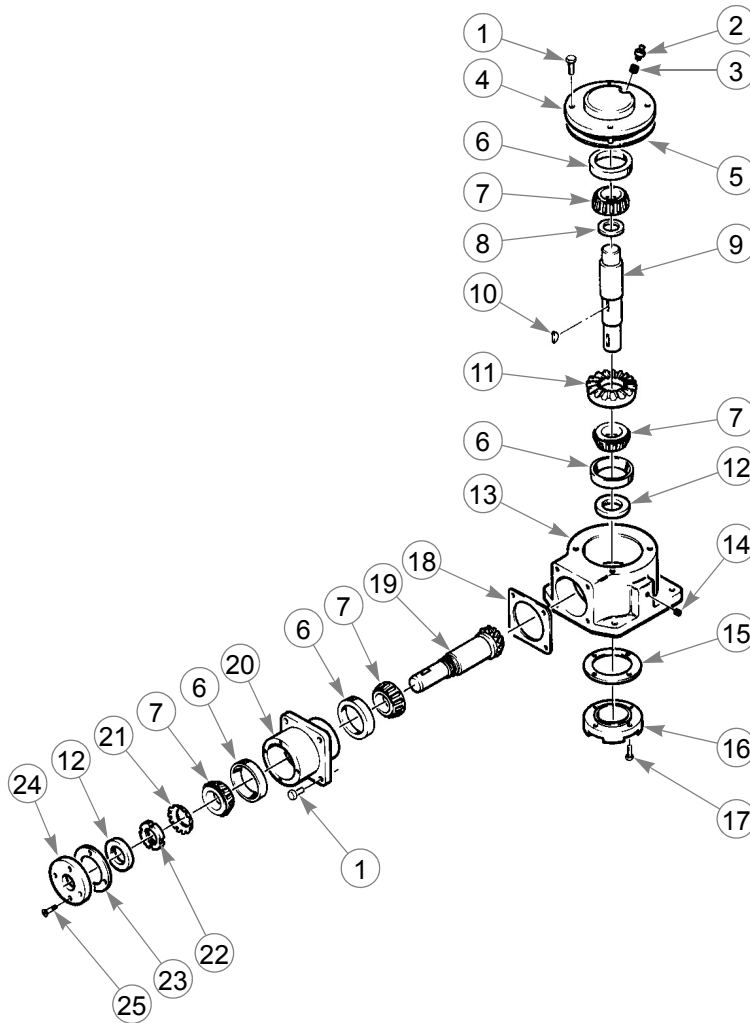
# Gearbox Breakdown - 532895 (WSI)



INDEX NO.	PART NO.	QTY.	DESCRIPTION	INDEX NO.	PART NO.	QTY.	DESCRIPTION
1	036707	8	CS .312-18 X .875 HX G5 BO	14	045583	1	CASE
2	017004	8	LW .312 MEDIUM SPRING ZN	15	740829	1	SIGHT GLASS
3	036046	1	RELIEF VALVE	16	045658	1	SHAFT SEAL
4	046656	1	END PLATE	17	045518	A/R	SHIM .003
5	049106	2	BEARING CUP		045500	A/R	SHIM .005
6	048991	2	BEARING CONE		045492	A/R	SHIM .02
7	046672	1	CROSS SHAFT	18	045682	1	NT .625-18 HX NL
8	045476	3	RETAINING RING	19	017145	1	MB .620 X 1.120 X .08 PN
9	081752	2	WOODRUFF KEY	20	046698	1	R/H GEAR
10	046680	1	L/H GEAR	21	045575	1	PINION HOUSING
11	045641	2	BEARING CONE	22	045559	1	PINION SHAFT
12	045633	2	BEARING CUP	23	045666	1	SHAFT SEAL
13	045450	A/R	SHIM .003				
	045468	A/R	SHIM .005				
	045443	A/R	SHIM .01				

## NOTES:

# Gearbox Breakdown - 532895 (Agrigear)



INDEX NO.	PART NO.	QTY.	DESCRIPTION	INDEX NO.	PART NO.	QTY.	DESCRIPTION
1	036707	8	CS .312-18 X .875 HX G5 BO	14	740829	1	SIGHT GLASS
2	036046	1	RELIEF VALVE	15	036665	2	SEAL CAP SHIM
3	036731	1	REDUCER BUSHING	16	036558	1	SEAL CAP
4	036525	1	BEARING CAP	17	055939	4	CS .25-20 X .750 HX G5 ZN
5	036640	2	BEARING CAP SHIM	18	036632	2	CARRIER SHIM
6	036608	4	BEARING CUP	19	084947	1	PINION SHAFT (19 TEETH)
7	036616	4	BEARING CONE	20	036533	1	PINION CARRIER
8	036673	1	SPACER	21	036681	1	LOCK WASHER
9	059543	1	GEAR SHAFT	22	036699	1	LOCK NUT
10	036715	1	KEY	23	036657	2	SEAL CAP SHIM
11	084939	1	SPIRAL BEVEL GEAR (25 TEETH)	24	036541	1	CARRIER SEAL CAP
12	036624	2	SEAL	25	036723	4	MS 10-24 X .750
13	036517	1	CASE				

## NOTES:

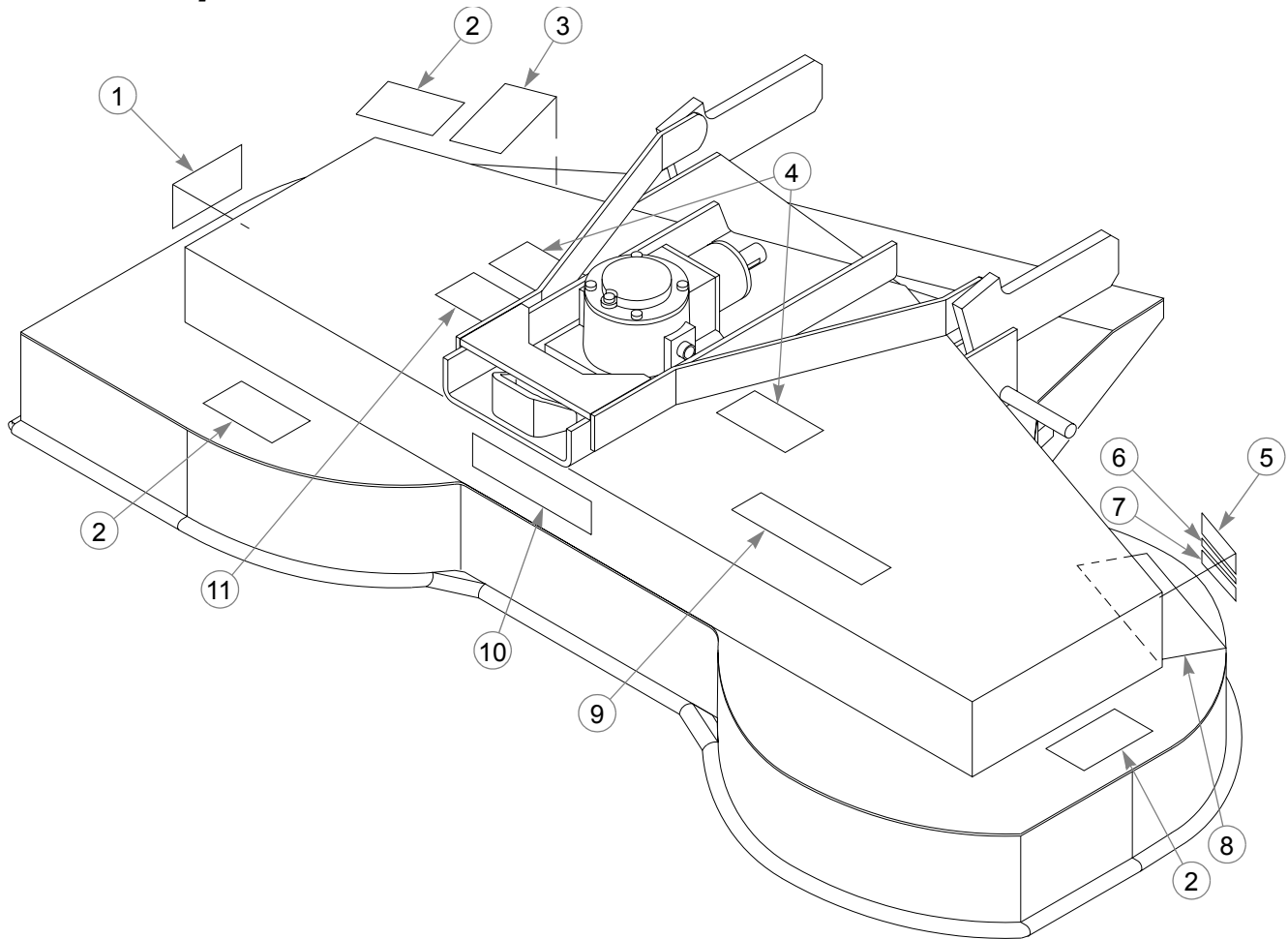


---

## Chapter 5 Contents

Decal Group - 925115 . . . . .	5-2
Decal Group - 923144 & 923268. . . . .	5-3
Decal Group - 924605 & 924613. . . . .	5-4

## **Decal Group - 925115**



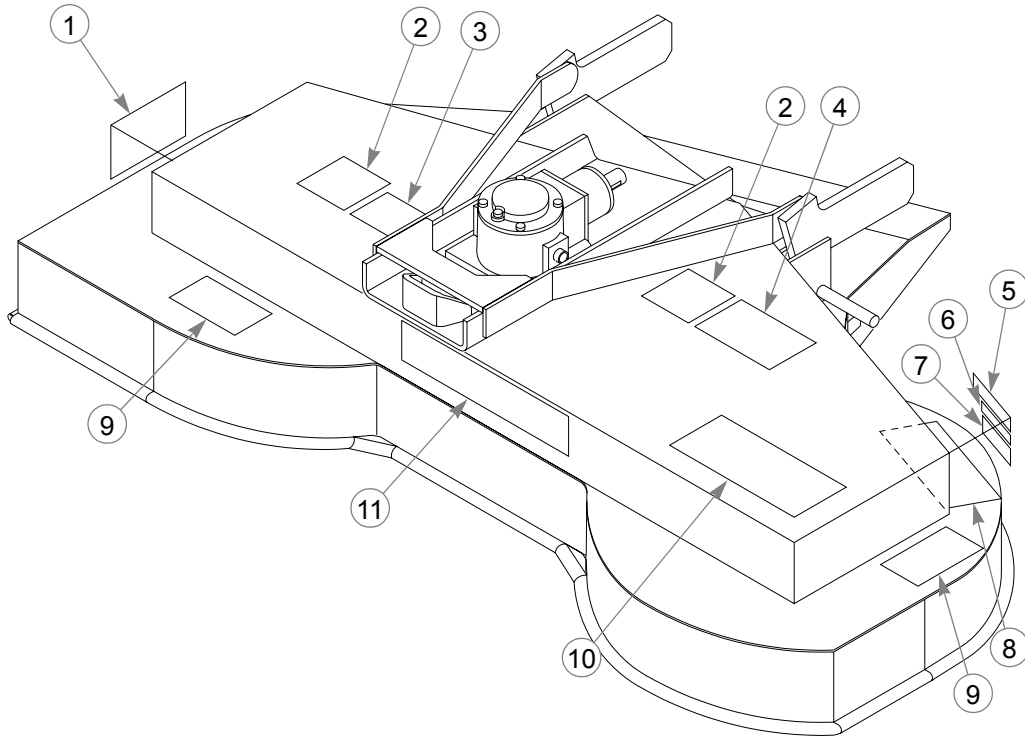
INDEX NO.	PART NO.	QTY.	DESCRIPTION
1	727420	1	DEFLECTOR POSITION DECAL
2	727438	3	WHIRLING BLADES DECAL
3	760637	1	MOWER DECK QUICK REFERENCE DECAL
4	727453	2	BELT & PULLEY DECAL
5		1	SERIAL NUMBER PLATE
6	741264	1	MADE IN U.S.A. DECAL
7	727917	1	PATENT NUMBER DECAL
8	251033	1	STEP TREAD
9	727636	1	LOGO DECAL
10	736769	1	60" 4-WAY DECK DECAL
11	727842	1	PTO SHAFT DECAL
12	757088K	1	DECAL KIT (INCLUDES ITEMS 1-12)

### **NOTES:**



---

## **Decal Group - 923144 & 923268**



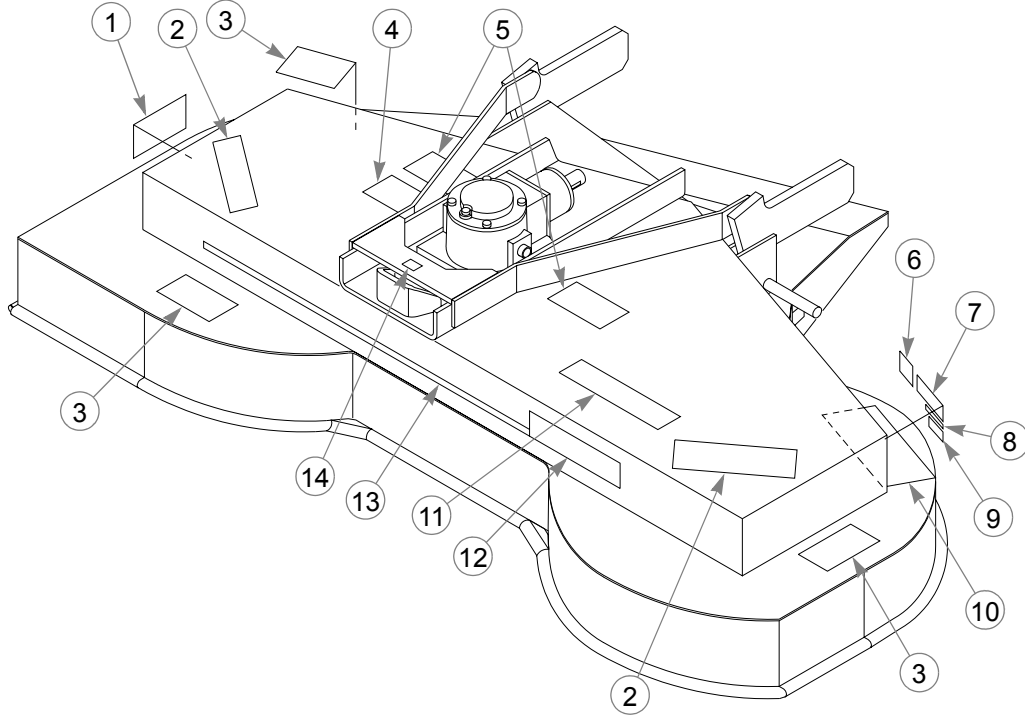
---

INDEX NO.	PART NO.	QTY.	DESCRIPTION
1	084046	1	DEFLECTOR POSITION DECAL
2	078675	2	BELT COVER DECAL
3	084194	1	DRIVE SHAFT DECAL
4	078444	1	DECK MAINTENANCE DECAL
5	081430	1	A.N.S.I. ATTACHMENT DECAL
6	084186	1	PATENT NUMBER DECAL
7		1	SERIAL NUMBER PLATE
8	251033	1	STEP TREAD
9	078428	2	BLADE CAUTION DECAL
10	082479	1	3-WAY DECK DECAL
11	084202	1	ATTACHMENT DECAL

---

### **NOTES:**

## **Decal Group - 924605 & 924613**



INDEX NO.	PART NO.	QTY.	DESCRIPTION
1	727420	1	DEFLECTOR POSITION DECAL
2	751164	2	QUADCYCLER DECK DECAL
3	727438	3	WHIRLING BLADES DECAL
4	727842	1	PTO SHAFT DECAL
5	727453	2	BELT AND PULLEY DECAL
6	727172	1	MADE IN U.S.A. DECAL
7		1	SERIAL NUMBER PLATE
8	727917	1	PATENT NUMBER DECAL
9	727446	1	A.N.S.I. ATTACHMENT DECAL
10	251033	1	STEP TREAD
11	727636	1	LOGO DECAL
12	736769	1	60° 4-WAY DECK DECAL
13	737015	1	DECK STRIPE DECAL
14	727834	1	READ OWNER'S MANUAL DECAL
15	757088K	1	DECAL KIT (INCLUDES ITEMS 1-14)
	736777	1	QUICK REFERENCE CARD (NOT SHOWN)

### **NOTES:**

# Numerical Index

Part No.	Page No.	Part No.	Page No.	Part No.	Page No.
<b>Index</b>					
<b>Numerics</b>					
008193	2-5, 2-7, 2-9, 3-3, 3-5	036673	4-3, 4-5	074252	2-7, 2-9, 3-5
011379	2-3, 2-5	036681	4-3, 4-5	074559	2-3, 2-5
011387	3-7	036699	4-3, 4-5	075291	2-3
012005	3-8	036707	4-2, 4-3, 4-4, 4-5	076547	2-3
015495	2-5, 3-3	036715	2-7, 2-9, 4-3, 4-5	076752	2-7, 2-9
016527	2-5, 2-7, 2-9, 3-7	036723	4-3, 4-5	077123	3-7, 3-8
016816	2-3, 2-5	036731	4-3, 4-5	077859	3-3
017004	4-2, 4-4	041707	2-7, 2-9	078378	2-7, 2-9
017012	2-5, 3-3, 3-5	042051	2-7, 2-9	078386	2-7, 2-9
017038	2-3, 2-5	042630	3-4	078428	5-3
017046	2-5, 2-7, 2-9, 3-3, 3-4, 3-5, 3-7	045443	4-2, 4-4	078444	5-3
017079	2-3, 2-5	045450	4-2, 4-4	078675	5-3
017137	2-5, 2-7, 2-9, 3-3, 3-5	045468	4-2, 4-4	078949	2-7, 2-9
017145	4-2, 4-4	045476	4-2, 4-4	080655	3-5
017244	3-2	045484	4-2	081430	5-3
017277	2-7, 2-9, 3-7	045492	4-2, 4-4	081752	4-2, 4-4
017350	3-7	045500	4-2, 4-4	082180	3-3, 3-7
018747	2-5, 3-3	045518	4-2, 4-4	082479	5-3
019216	4-3	045526	4-2	084046	5-3
019521	3-2, 3-7	045534	4-2	084186	5-3
023036	2-3, 2-5	045559	4-2, 4-4	084194	5-3
024927	2-3, 2-5	045567	4-2	084202	5-3
025320	2-3, 2-5	045575	4-2, 4-4	084939	4-5
025601	2-7, 2-9	045583	4-4	084947	4-5
027284	1-1, 2-7, 2-9	045633	4-2, 4-4	085985	2-5, 3-3
027300	1-1	045641	4-2, 4-4	089789	2-3, 2-5
028274	2-7, 2-9	045658	4-2, 4-4	212076	2-7, 2-9
030437	2-3, 2-5	045666	4-2, 4-4	244384	2-7, 2-9
034736	4-3	045682	4-2, 4-4	251033	5-2, 5-3, 5-4
034751	4-3	045765	2-5, 3-3	259515	2-3, 2-5
034769	4-3	046656	4-2, 4-4	263517	2-7, 2-9
034843	3-8	046672	4-4	287649	2-3, 2-5
035345	4-2	046680	4-4	306910	2-3
035626	2-3, 2-5	046698	4-4	306928	2-3
035808	2-7, 2-9	048850	3-2, 3-7	306936	3-4
036046	4-2, 4-3, 4-4, 4-5	048868	3-2, 3-7	306969	3-4
036244	2-5, 3-3, 3-5	048991	4-2, 4-4	306977	3-3
036384	2-7, 2-9	049106	4-2, 4-4	307082	3-3
036517	4-3, 4-5	049148	3-2, 3-7	310185	3-7
036525	4-3, 4-5	049155	3-2, 3-7	315226	3-7
036533	4-3, 4-5	049163	3-2, 3-7	315234	3-7
036541	4-3, 4-5	049171	3-2, 3-7	315465	2-3, 2-5
036558	4-3, 4-5	049346	2-5, 3-3	315622	3-5
036608	4-3, 4-5	054502	3-5	315911	3-5
036616	4-3, 4-5	055939	2-3, 2-5, 4-5	344267	3-7
036624	4-3, 4-5	056077	2-3, 2-5	370494	2-3, 2-5
036632	4-3, 4-5	056176	2-3, 2-5	374827	1-1
036640	4-3, 4-5	058875	2-7, 2-9	466672	3-7
036657	4-3, 4-5	059543	4-5	466680	3-7
036665	4-3, 4-5	061812	2-7, 2-9	466698	3-7
		067918	3-4	466888	3-5
		068759	2-7, 2-9, 3-7	467126	2-7, 2-9

Part No.	Page No.	Part No.	Page No.	Part No.	Page No.
467258	2-3, 2-5	506428	3-7	736769	5-2, 5-4
467324	2-7, 2-9	518316	2-7, 2-9	736777	5-4
469221	2-5	532861	2-7, 2-9	737015	5-4
469619	2-7, 2-9	532887	3-5	740829	4-3, 4-4, 4-5
469791	3-2	532895	2-9	741264	5-2
469882	2-5, 3-3	532911	3-7	747402	3-2, 3-7
469916	2-5, 3-3	533935	2-7, 2-9	747410	3-2, 3-7
469924	2-5, 3-3	537175	3-5	747428	3-2, 3-7
474361	2-3, 2-5	537225	2-5	751164	5-4
474379	2-3, 2-5	706168	2-7, 2-9	757088K	5-2, 5-4
474445	2-3, 2-5	712364	3-8	758821	2-3, 2-5
474460	2-3, 2-5	712372	2-7, 2-9	760637	5-2
474478	2-3, 2-5	712919	3-5	768044	3-4
474486	2-5	727172	5-4	773242	2-7, 2-9
474528	2-7, 2-9	727420	5-2, 5-4	773259	2-7, 2-9
474544	2-7, 2-9	727438	5-2, 5-4	923144	1-1, 2-4
474569	2-3, 2-5	727446	5-4	923268	1-1, 2-4
474692	2-5	727453	5-2, 5-4	924605	1-1, 2-4
474700	2-5	727636	5-2, 5-4	924613	1-1, 2-4
475723	2-7, 2-9	727834	5-4	925115	1-1, 2-2
481531	3-3	727842	5-2, 5-4		
506212	2-7, 2-9	727917	5-2, 5-4		